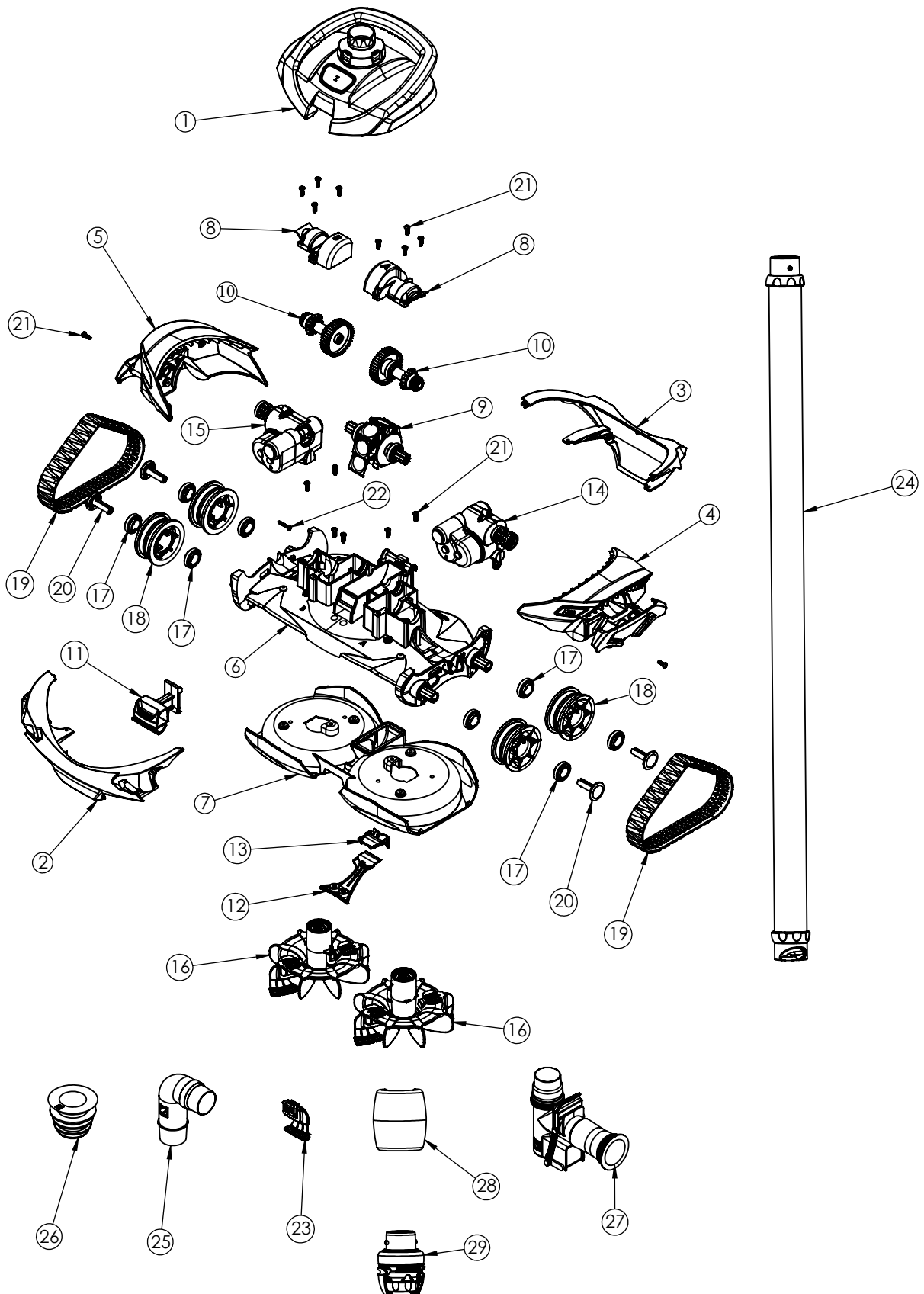


SPARE PARTS

AX20 ACTIV



SPARE PARTS

AX20 ACTIV

Parts

Part No	Description	No of Parts Required
1	30093801 BODY TOP SWIVEL ASSEMBLY AX20 ACTIV	1
2	A0427901 BODY FRONT PANEL AX20 ACTIV	1
3	A0428001 BODY REAR PANEL AX20 ACTIV	1
4	30138500 BODY LEFT SIDE PANEL W/TRACK GUARD AX20 ACTIV	1
5	30138501 BODY RIGHT SIDE PANEL W/TRACK GUARD AX20 ACTIV	1
6	30095300 CHASSIS ASSEMBLY AX20 ACTIV	1
7	30138600 BODY TRAY AX20 ACTIV	1
8	30138700 GEAR HOUSING COVERS (A & B)	1
9	30093601 ENGINE ASSEMBLY	1
10	30094100 DRIVE SHAFT ASSEMBLY	1
11	A0450600 BODY LATCH SILVER	1
12	30102000 INLET ASSEMBLY AX20	1
13	A0450200 INLET REDUCER AX20	1
14	30064101 DIRECTION CONTROL DEVICE, V2, SIDE A	1
15	30064201 DIRECTION CONTROL DEVICE, V2, SIDE B	1
16	R0937500 CYCLONIC SCRUBBER, BLACK GREY, KIT (2PK)	1
17	W7230223PK BALL BEARING WHEELS (8PK)	1
18	A0434400 WHEEL SUCTION CLEANER (QTY 1)	1
19	A0434300PK TRACK MXNXT (Pack of 2)	1
20	A0203002 WHEEL PIN SILVER (QTY 1)	1
21	F0106100 SCREW, M4 X 12MM, PHILLIPS #2PAN HEAD, 5/PK	2
22	F0106600 SCREW, THREAD FORMING, #6-18 7/8" TYPE A, PHILLIPS #2 PAN HEAD, 5/PK	2
23	A0358802 BRUSH SCRUBBER MX SILVER	2
24	W26060 GLOBAL HOSE, US, 1M, GRAY/BLUE (Pack of 30)	2
25	A0219700 90 DEGREES FLOW ELBOW	2
26	W70263 ADAPTOR, I/G WEIR CUFF (EVA) WHITE	4
27	W70281C AD FLOW VALVE	1
28	A0173800 HOSE FLOAT	1
29	FRV100 FLOW REGULATOR VALVE (FRV)	1