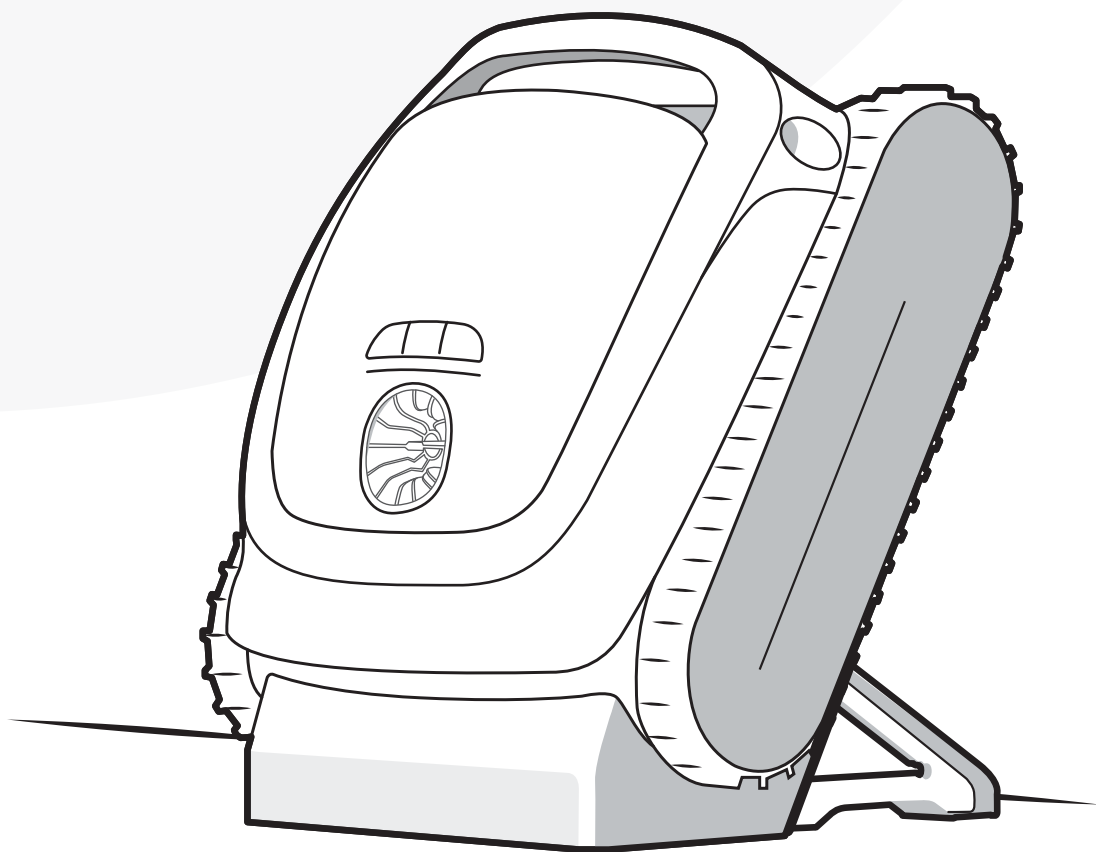


Beatbot

User Manual

AquaSense



⚠ IMPORTANT SAFETY INSTRUCTIONS

READ ALL INSTRUCTIONS BEFORE USING

When installing and using this electrical equipment, basic safety precautions should always be followed, including the following:

WARNING: Read all safety warnings and instructions. Failure to follow the warnings and instructions may result in electric shock, fire and/or serious injury.

1.1 Warnings and Cautions

• READ AND FOLLOW ALL INSTRUCTIONS.

- This product can be used by children aged 8 years and above and persons with physical, sensory, or intellectual deficiencies, or limited experience or knowledge under the supervision of a parent or guardian to ensure safe operation and to avoid any risks. Cleaning and maintenance shall not be done by children without supervision.
 - Children shall not play with this product. Ensure children and pets are kept at a safe distance from the robotic pool cleaner while it is in operation.
 - Prevent unintentional starting. Ensure the robot is turned off before picking up or carrying it. Carrying the robot with your finger on the power button invites accidents.
 - Under abusive conditions, battery liquid may be expelled. Avoid contact. If contact occurs, rinse with water. If liquid contacts the eyes, seek medical attention. Battery liquid may cause irritation or burns.
 - Do not use a battery or appliance that is damaged or modified. Damaged or modified batteries may exhibit unpredictable behavior resulting in fire, explosion or risk of injury.
- Do not use any third-party battery or charge dock. Use only with RCDS01/RCDS02 supply unit specified by the manufacturer. If the supply cord is damaged, it must be replaced by the manufacturer, its service agent or similarly qualified persons in order to avoid a hazard.
 - Make sure the robot is turned off and the charge dock is unplugged before performing maintenance.
 - Do not place the charge dock near a heat source. Follow all charging instructions and do not charge the appliance outside of the temperature range specified in the instructions. Charging improperly or at temperatures outside of the specified range may damage the battery and increase the risk of fire.
 - This product contains batteries that can only be replaced by qualified technicians. Do not modify or attempt to repair the appliance or the battery except as indicated in the instructions for use and care. Have servicing performed by a qualified repair person using only identical replacement parts. This will ensure that the safety of the product is maintained.
 - Do not enter pool while the robot is working in water.

- When the robotic pool cleaner is underwater or other scenarios where it is not convenient to lift the robot directly, it needs to be pulled out using the supplied hook. Please use the hook correctly and carefully to avoid any accidental injury.
- Do not expose a battery pack or appliance to fire or excessive temperature. Exposure to fire or temperature above 130°C may cause explosion. The temperature of 130°C can be replaced by the temperature of 265°F.
- Under normal use of condition, this equipment should be kept a separation distance of at least 20 cm (7.87 inches) between the antenna and the body of the user.

- The robot is equipped with a range of cutting-edge sensors that play a crucial role in its functionality and performance. To ensure the robot's performance and lifespan, please do not place the robot under extreme environmental conditions for a long time, such as high temperature, strong light, or low temperature. It is recommended to use and store the robot within the requirements of this manual.
- Exceeding an altitude of 2100 m (6889.77ft) will cause the robotic pool cleaner to be unable to function properly. Therefore, please ensure that the robot is used in areas that comply with this altitude restriction to avoid any issues arising from operating the robot at high altitudes.

• **SAVE THESE INSTRUCTIONS.**

1.2 FCC/IC Statement

Any changes or modifications not expressly approved by the part responsible for compliance could void the user's authority to operate the equipment. This equipment has been tested and found to comply with the limits for a Class B digital device, under part 15 of the FCC Rules. These limits are designed to provide reasonable protection against harmful interference in a residential installation. This equipment generates uses and can radiate radio frequency energy and, if not installed and used in accordance with the instructions, it may cause harmful interference to radio communications. However, there is no guarantee that interference will not occur in a particular installation. If this equipment does cause harmful interference to radio or television reception, which can be determined by turning the equipment off and on, the user is encouraged to try to correct the interference by one or more of the following measures:

- Reorient or relocate the receiving antenna.
- Increase the separation between the equipment and receiver.
- Connect the equipment to an outlet on a circuit different from that to which the receiver is connected.
- Consult the dealer or an experienced radio/TV technician for help.

1.3 MPE Requirements

To satisfy FCC / IC RF exposure requirements, a separation distance of 20 cm or more should be maintained between the antenna of this device and persons during device operation. To ensure compliance, operation closer than this distance is not recommended.

Under normal use conditions, this equipment should be kept a separation distance of at least 20cm between the antenna and the body of the user.

1.4 CEC

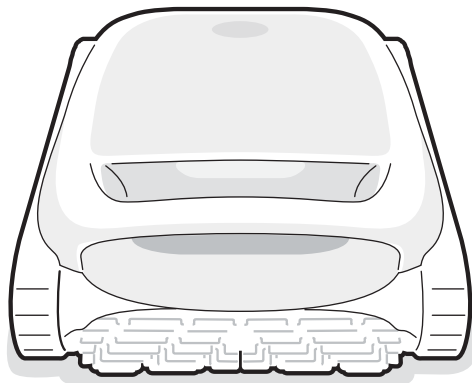
Press and hold "ECO Mode" button for about 20s to enable CEC Mode. And press any button to disable it.

1.5 Water Conditions for Robot Use

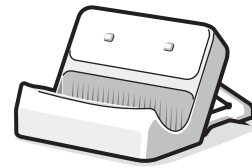
Chlorine	Max 4 PPM
PH	7.0-7.8
Temperature	6-35°C (42.8-95 °F)
Salt	Maximum = 5000 PPM
Water Depth	0.5-3.0 m (1.64-9.84 ft)
Ingress Protection	IP68 for robotic pool cleaner, IPX4 for charge dock

2 Packaging accessories

Robotic Pool Cleaner



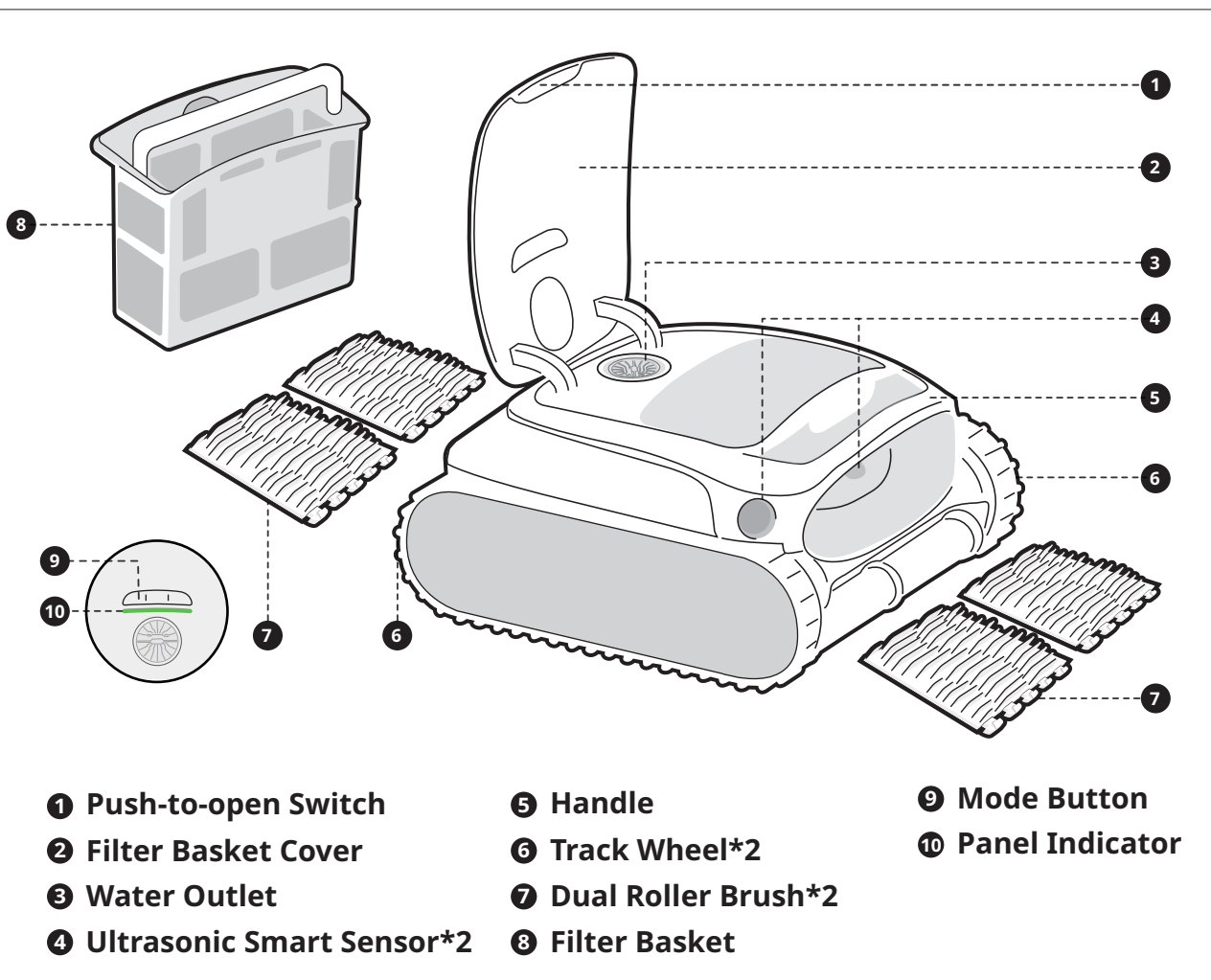
Charge Dock



Hook



3 Product Structure Diagram



① Push-to-open Switch

② Filter Basket Cover

③ Water Outlet

④ Ultrasonic Smart Sensor*2

⑤ Handle

⑥ Track Wheel*2

⑦ Dual Roller Brush*2

⑧ Filter Basket

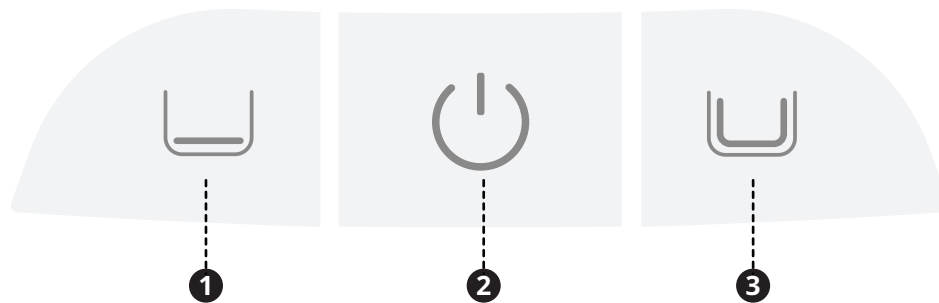
⑨ Mode Button

⑩ Panel Indicator

* The diagram is for reference only. Please refer to the actual product for accuracy.

4 Product Specifications

Model	AquaSense
Working Voltage	Robotic pool cleaner: 21.6 V Charge dock: 100-240 V, 50/60 Hz
Run Time	2.5~3.5 h
Charge Input	Charge dock: 100-240 V, 50/60 Hz
Charge Output	Charge dock: 28 V $\overline{=}$ 3 A
Nominal Capacity	6700 mAh
Charging Time	2.5~3 h (25 °C/77 °F)
Operation Frequency	2400-2483.5 MHz
Maximum Output Power	< 20 dBm
Filter Basket Capacity	2 L
Running Speed	0.18 m/s (0.59 ft/s)
Charging Environment Temperature	0 °C~40 °C (32 °F~104 °F)
Working Water Depth	0.5 m-3 m (1.64 ft-9.84 ft)
Product Storage Temperature	-20 °C~45 °C (-4 °F~113 °F) RH<=75%



○ Power Button (②)

Short press to turn the robot on, and press and hold for about 3s to turn it off.

○ Mode Button

Press the corresponding mode button to switch.

- Quick mode (①): Clean the floor once;
- Standard mode (③): Clean once in the order of floor, wall and waterline.

○ Hotspot Configuration

Press and hold both the "Quick Mode" (①) and "Power" (②) buttons simultaneously for about 3s to trigger the hotspot configuration.

○ Factory Reset

Press and hold the "Quick mode" (①), "Power" (②) and "Standard Mode" (③) buttons simultaneously for about 10s to restore the factory settings.

6.1 Instructions for Using the APP

APP Download

You can either scan the QR code below or search for "Beatbot" in the App Store or Google Play to download the APP.



Robot Connection

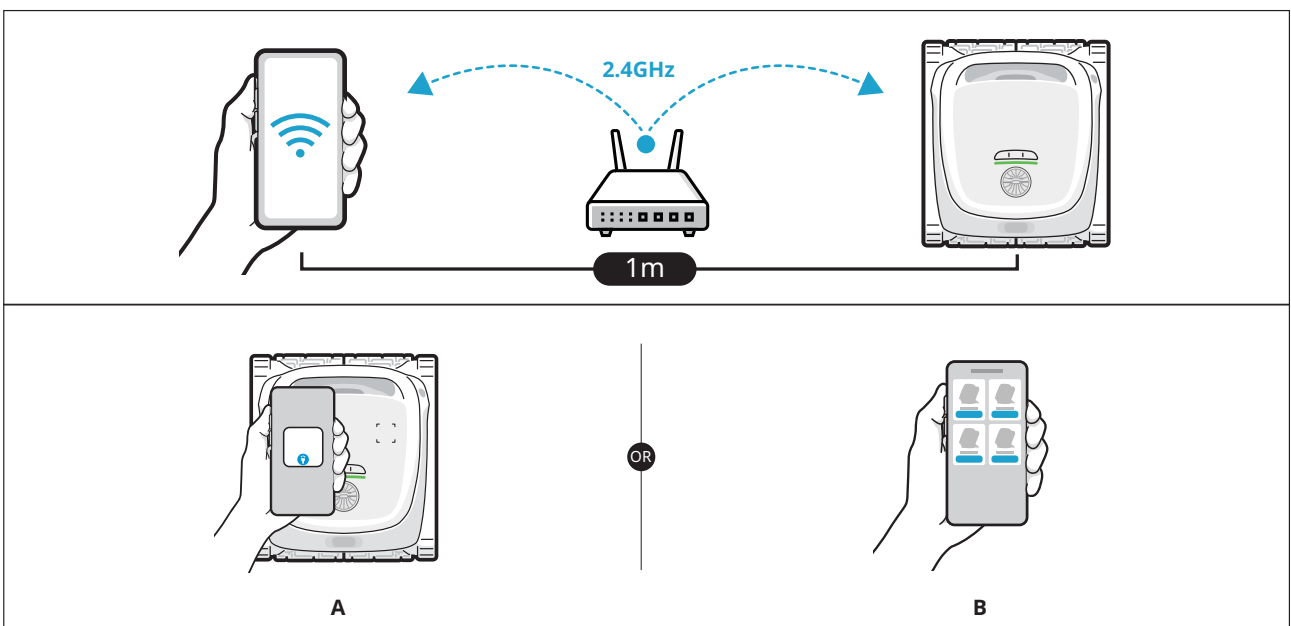
Please check the following items before connecting:

- Make sure the robot is turned on;
- Confirm that both your mobile phone and the robot are within the same Wi-Fi coverage range with a strong signal;
- Ensure your phone is connected to Wi-Fi, supporting only the 2.4GHz network;
- Bring the phone close to the robot (the distance between your phone and the robot should be within 1m).

Press the "Power" and "Quick Mode" buttons simultaneously for about 3s, and when you see the indicator flashing blue, the robot is ready for network setup. Then, you can choose either of the following methods to complete the connection:

A. Scan to add (recommended): Tap the "Scan to Add" on the home page of the APP, aim the camera at the QR code on the robot, and follow the APP instructions to complete the connection.

B. Add manually: Tap the "Add Device" on the home page of the APP, choose your robot model, and follow the APP instructions to complete the connection.



7.1 Charging

○ Install the charge dock

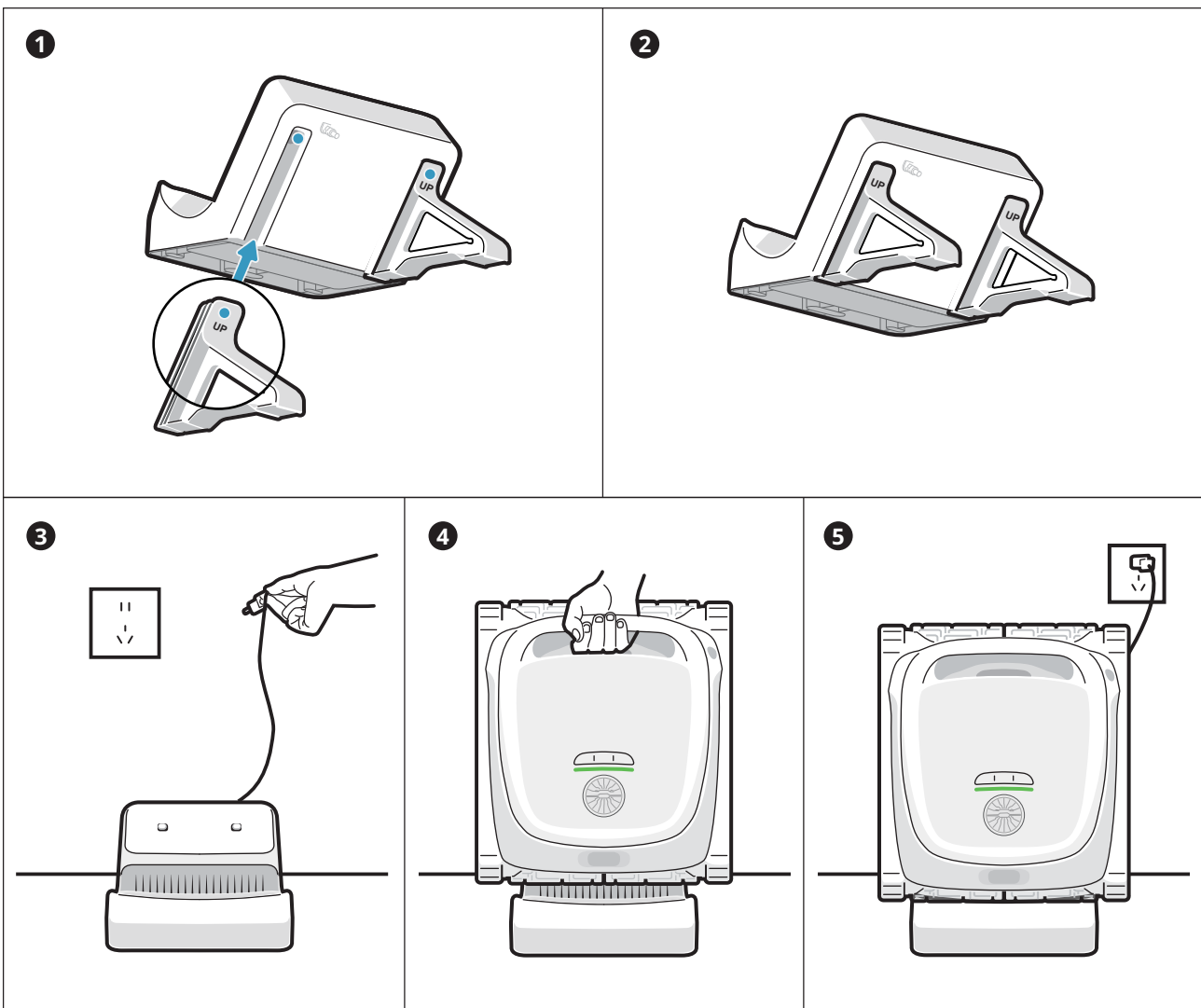
Push the bracket from the bottom up into the groove on the back of the charge dock (**1**). It is properly installed when you hear a "click" (**2**).

○ Connect the power supply

Plug into the power source (**3**).

○ Charge the robot

Place the robot on the charge dock (**4**). When the panel indicator on the robot shows a breathing light (**5**), it means the robot is charging.

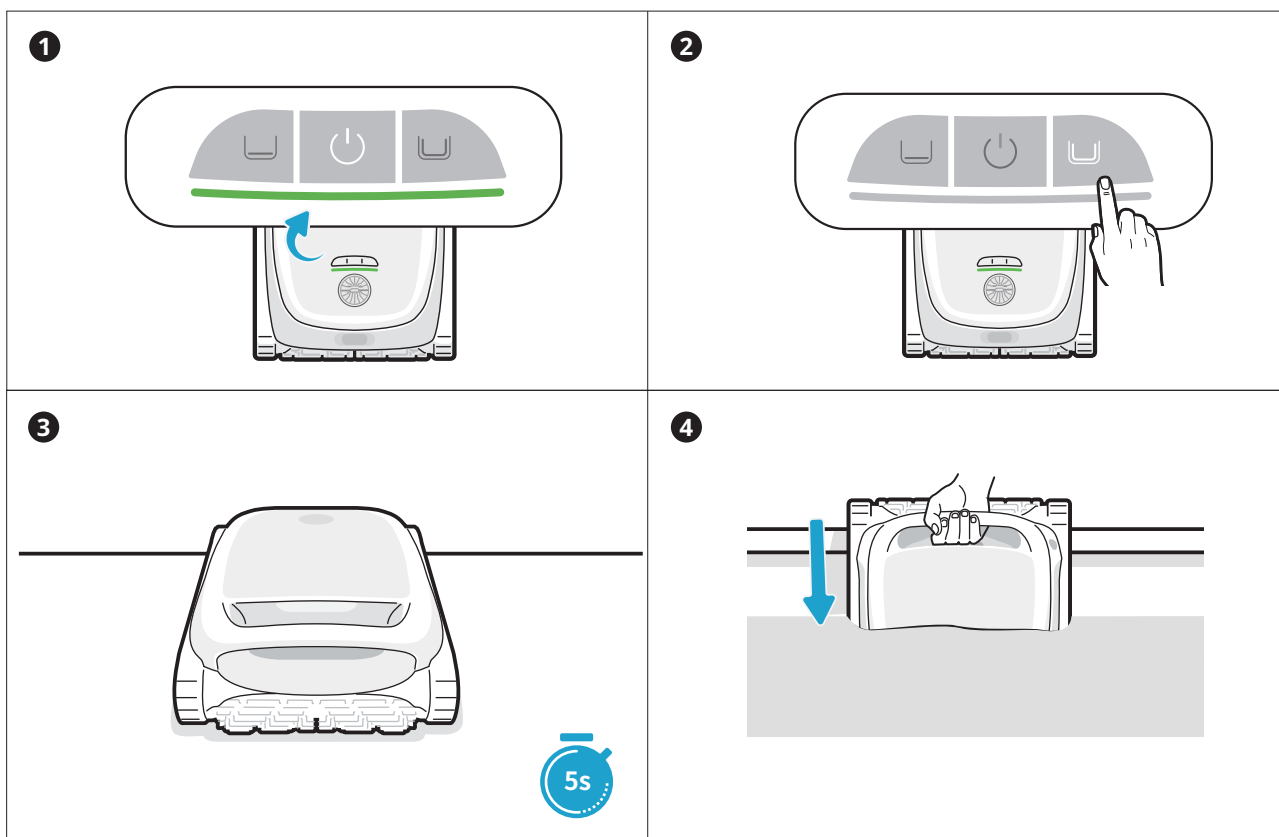


💡 Tips

- Before using the robot, please make sure it is sufficiently powered.
- The charging temperature is 0°C ~ 40°C / 32~104°F. While charging, it is recommended to keep the robot within the Wi-Fi coverage area and away from moisture and direct sunlight.

7.2 Before Cleaning

- Before cleaning, make sure the robot is turned on and has enough power. The panel indicator on the robot should be solid green when the robot is fully charged (**1**). (If you have connected the robot to the APP, you can also check the power level within the APP).
- Set the cleaning mode, and the selected mode button will show solid white (**2**).
- **Before entering the water, place the robot on a level surface and wait for about 5s for it to calibrate (**3**).**
- After placing the robot in the water, it will start cleaning automatically (**4**).



! Before entering the water, it is crucial to place the robot on a level ground and to wait for about 5s for it to calibrate. By following these steps, you ensure maximize the effectiveness of the robot's cleaning path.

💡 Tips



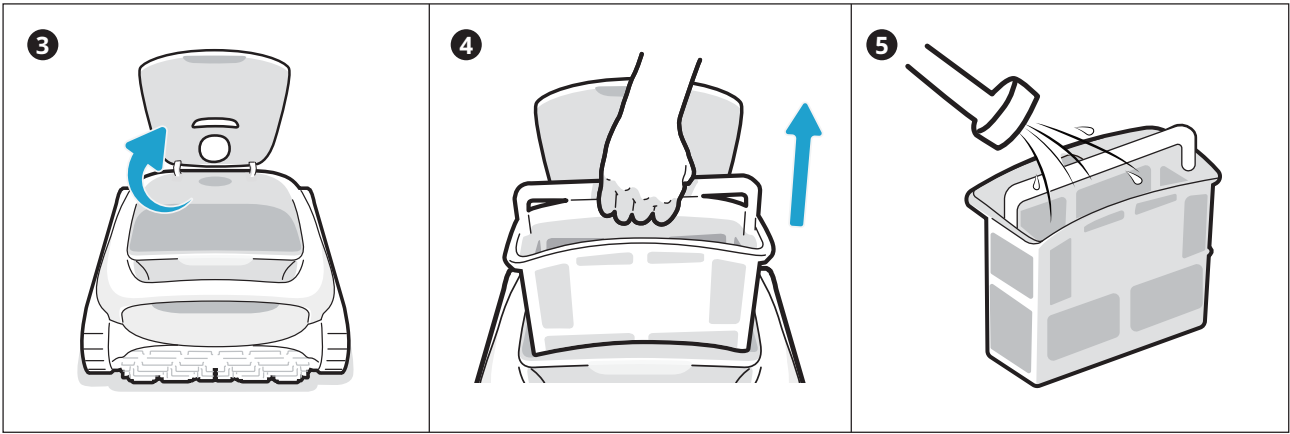
Before cleaning, please make sure there are no foreign objects such as towels or toys in the pool.



Avoid animals and people from entering the pool during cleaning.



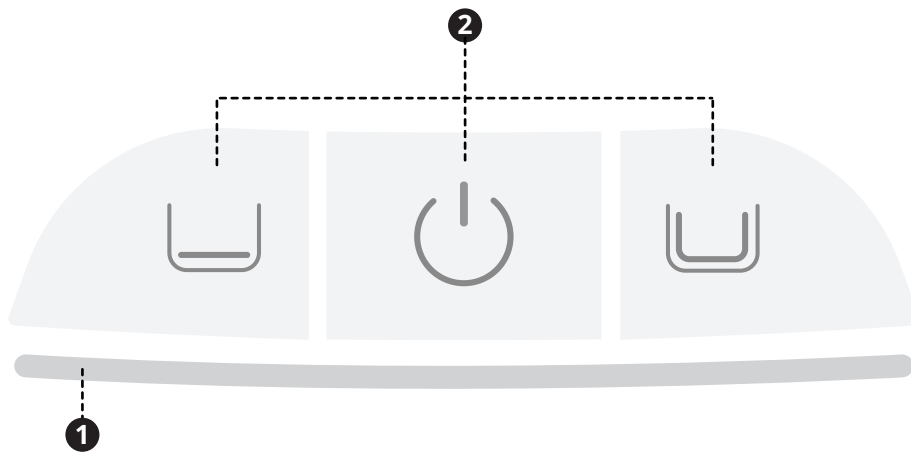
Please turn off the pool circulation or heating system before cleaning.



Tips

- After the robot stops dripping water, put it back on the charge dock for the next use.
- If the robot fails to return to the shore automatically, please use the supplied hook to pull it to the surface and then lift it out.

8 Lighting Effects



EN

1 Panel Indicator

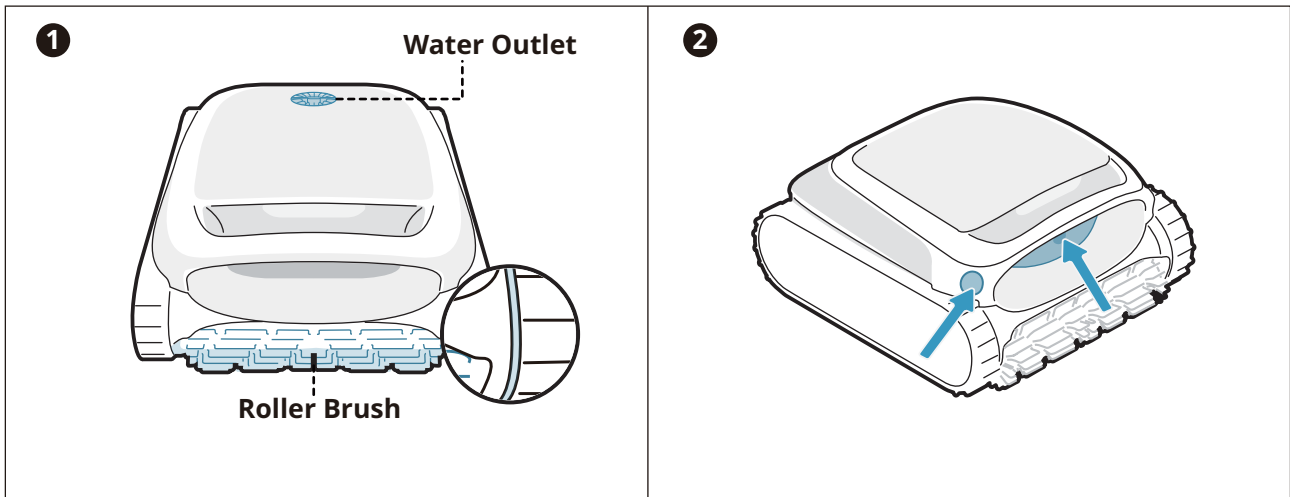
- Solid green light Sufficient battery power
- Solid yellow light 15% ≤ Battery ≤ 30%
- Solid orange light Battery ≤ 15%
- Flashing orange light Robot malfunction
- Flashing blue light Network configuring/OTA upgrading
- Breathing light (The displayed light color corresponds to the current battery level) Charging

2 Power Button+Mode button

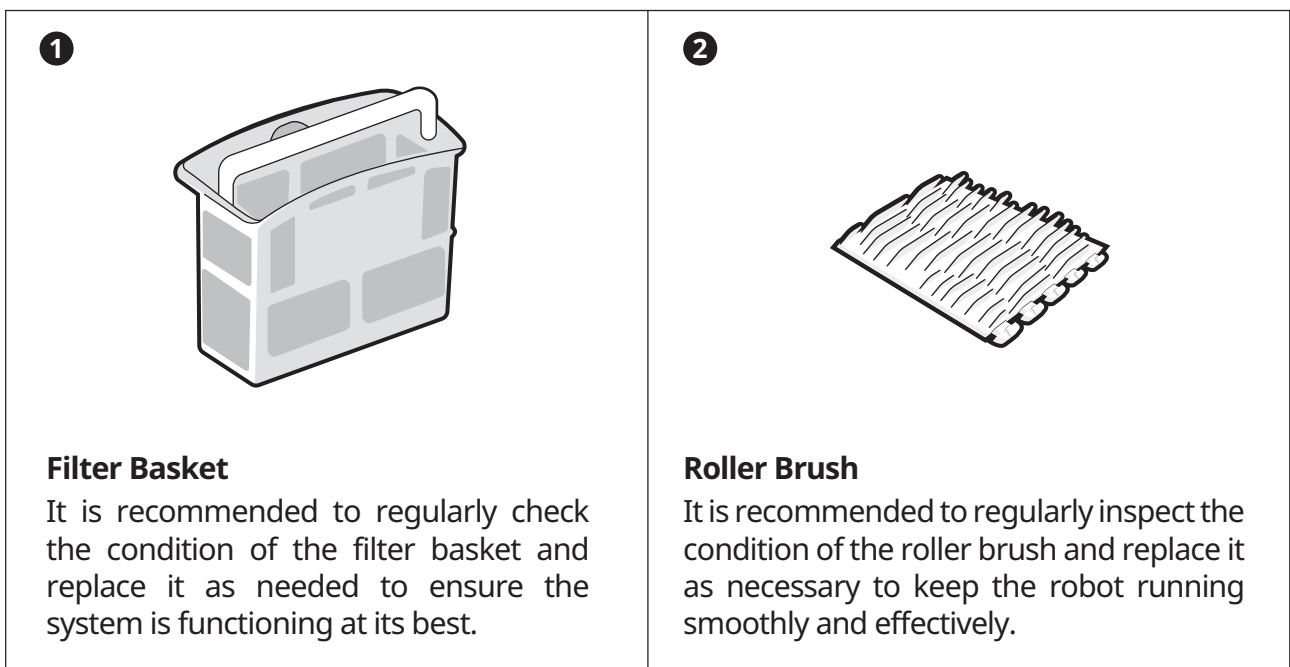
- Solid white light Robot is powered on; This cleaning mode is selected
- Flashing white light Returning

9.1 Maintenance

- After each use, check and clean any foreign objects, such as tangled hair and trapped sand, from the water outlet, track wheels and roller brushes.
- Clean the ultrasonic smart sensors. Ensure no obstacles on the sensors before cleaning.



9.2 Replaceable Accessories



- Find an appropriate indoor storage space that is cool, dry, and shielded from direct sunlight, rain, frost.
- Keep the robotic pool cleaner away from extreme temperatures, open flames, and places accessible to children.
- Properly protect it from dust when stored for a long period of time.
- Power off and disconnect it from the power source when storing. Please check the battery level at least every 6 months and charge the battery to around 50%.

11.1 What type swimming pool is suitable?

Available for all shapes of pools, and pools of vinyl, fiberglass, ceramic and other materials.

11.2 Why does the robot not move or move slowly at the pool floor?

- Please turn off the pool circulation or heating system before cleaning.
 - The robot may be stuck by the drain or other obstacles on the pool floor. If it does not get out of the trap successfully after a few minutes, please help it manually by using the hook. And the robot will resume cleaning after getting out of the trap.
 - If the pool is too dirty, the robot will quickly suction up debris and sludge. Please check the filter basket promptly to see if it needs cleaning.
-

11.3 Why is there water in the new machine?

As each machine needs to undergo strict testing before leaving the factory, including underwater testing, etc., there will be a small amount of residual water stains, which is normal, please feel free to use it.

11.4 Why doesn't the robot follow the S-shaped path during pool floor cleaning?

- In cases where the connection between the pool floor and walls is curved or the pool shape is too complex, the robot will switch to DeepSense Mode for a better cleaning.
 - The robot is in MultiZone Mode cleaning.
-

11.5 Why can't the robot be charged?

- Please check if the robot is properly plugged in.
- Ensure that the robot is correctly positioned on the charge dock.
- Examine whether the charging pins of the dock and the robot are rusted or soiled. If so, please clean them before attempting to charge again.

11.6 How to perform OTA upgrades?

To perform OTA upgrades, please follow these steps:

- Connect your robot to the APP.
 - Access the "Settings" menu in the APP and navigate to the "Firmware Upgrade" section.
 - Follow the prompts to initiate the upgrade process. During the upgrade, please make sure:
 - The robot remains connected to the charge dock or is in a charging state;
 - The robot's battery level is sufficient (you can check the APP for details);
 - Both your phone and the robot have access to a stable network connection.
-

11.7 Why is the robot offline?

- Weak Wi-Fi signal: the robot is far away from the area of Wi-Fi signal or it enters the water, causing the network to disconnect. The robot will connect automatically when the signal is restored.
 - Device shutdown: the robot automatically shuts down when it runs out of power. After charging and powering on, the robot will connect automatically.
 - Device is connected by another account: the robot has been connected by another user. You can reset its Wi-Fi and connect again.
 - Router related: If the router is rebooting, if there are changes to the router's Wi-Fi name or password, or if the router has blacklisted the device, please address these issues first to determine if the device comes back online. If the issue persists, reset the Wi-Fi and reconnect.
-

11.8 Why does the robot go offline after entering the water?

Wi-Fi signals operate using 2.4GHz electromagnetic waves to transmit data. Water, being a medium with a high dielectric constant, can absorb and scatter these electromagnetic waves significantly. When the robot is submerged in water, the water acts as a barrier that severely attenuates the Wi-Fi signal, making it difficult for the robot to maintain a stable connection to the network. The loss or weakening of the Wi-Fi signal in water can cause the robot to lose its connection to the network and go offline.

11.9 What should I do if the filter basket is clogged?

When you receive the notification for a clogged filter basket, please clean the filter basket promptly. It's important to note that when you use the pool for the first time in this season or after a long period of inactivity, there may be a significant buildup of sediment or dead algae at the pool floor, leading to a blockage in the filter basket. In such cases, it is recommended to turn on the circulation system to help the pool clear up more quickly. Regular maintenance and cleaning of the filter basket will help prevent future blockages and ensure optimal pool performance.

11.10 Why does the robot automatically return when the battery is not used up?

The robot returns automatically before the battery is depleted to prevent the following situations:

- In case the battery runs out and the robot shuts down, it may not be able to report its status in a timely manner.
 - To prevent deep discharging of the battery, which can help prolong the battery's lifespan.
- Before each use, please ensure that the robot has sufficient battery power for optimal performance.

12 After-sales Service

Warranty Policy	2-year warranty
After-sales Email	service@beatbot.com
Official Website	www.beatbot.com
North America Toll Free	(833) 702-4399 Mon-Sun 9:00 am-6:00 pm (CST)

* Please refer to the Beatbot official website for the latest after-sales policy.

EN

The lithium-ion pack contains substances that are hazardous to the environment. Before disposing of the robot, please remove the battery pack, then discard or recycle it. It is used according to local laws and regulations of the country or region.

WEEE Information

All products bearing this symbol are waste electrical and electronic equipment (WEEE as in directive 2012/19/EU) which should not be mixed with unsorted household waste. Instead, you should protect human health and the environment by handing over your waste equipment to a designated collection point appointed by the government or local authorities for recycling waste electrical and electronic equipment. Correct disposal and recycling will help prevent potential negative consequences to the environment and human health. Please contact the installer or local authorities for more information about the location as well as the terms and conditions of such collection points.